



## In This Issue:

**BERARD**  
SINCE  
1945  
The Mega Transport Experts

- > Building Baton Rouge | I10/I12 College Dr. Flyover Project
- > On The Road | Vessel Offloads & Transports
- > Team Member Spotlight | Madison Frey

# Building Baton Rouge I-10 / I-12 College Dr. Flyover Project



## Job Specs

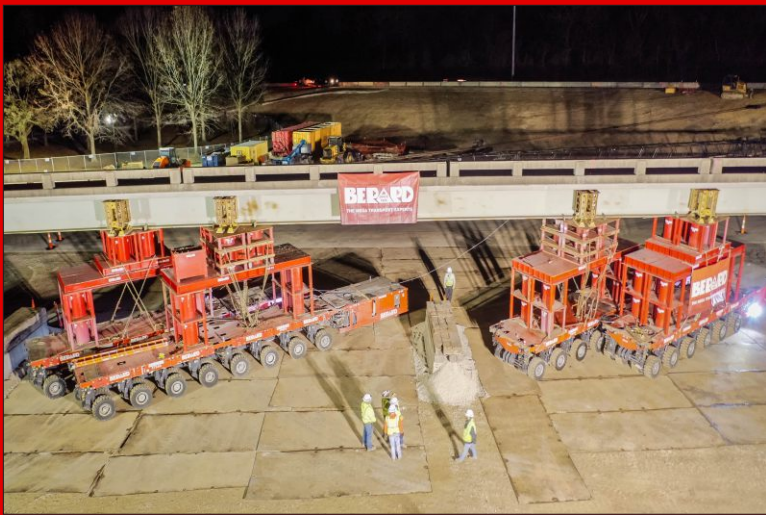
**Weight:**  
277,360 lbs.

**Dimensions:**  
200'L x 10'-10"W  
x 9'-10"H

**Equipment Used:** 28 axle lines of SPMTs, 4 power packs and accelerated bridge design grillage

The Beard team was recently commissioned to remove a bridge span section of the I-10/I-12 College drive overpass in Baton Rouge, Louisiana. This project is part of an ongoing historic development of Baton Rouge and has not seen anything of this size since the initial construction of the interstate. The removal was necessary for future widening of the overpass and will eventually reduce congestion making the commute more safe and efficient for those that travel in this vicinity. Berard was brought in to transport the 200' long section from its current position to a lay down yard nearby. The team utilized 28 axle lines of SPMTs with accelerated bridge design grillage to reach the proper height to lift the span. Once lifted, the Beard team slowly moved the span to a lay down yard where it was lowered 13'. Berard will be installing the entire over pass in two phases at a later date with this transport being the first of four phases. Our team went over and beyond and we thank all involved to make this a great success story!







# On The Road Vessel Offloads & Transports



## Job Specs

**Weight:** Up to 230,000 lbs.

**Dimensions:**  
Up to 52' L x 19' W x 19' H

## Equipment Used:

Deck barge, tugboats, 8 axle lines Goldhofer PST-SLE, (2) Faymonville HighwayMAX trailers, 12 lines Goldhofer THP-SL, prime movers, ramps, ballast pumps, winch trucks, and escort vehicles

The Berard team accepted the challenge to deliver 5 vessels from the Port of Houston, TX to a petrochemical facility construction site near Baton Rouge, LA. With an insufficient barge roll-off site at the destination, Berard engineers and managers went to work determining the most efficient delivery plan. A suitable barge offloading site was located 7 miles away, although the transport route for the 23' high cargo was not commonly used for oversize loads. Berard worked with local utilities and Louisiana DOTD to create a feasible solution for transport, including wrong way travel, matting across grass medians, and vegetation mitigation along the route. Once an offloading schedule was set, Berard monitored rising levels of the Mississippi River and adjusted the roll-off site accordingly. The plan proved to be perfect as all 5 units were delivered in 2 consecutive days.





# Madison Freyou

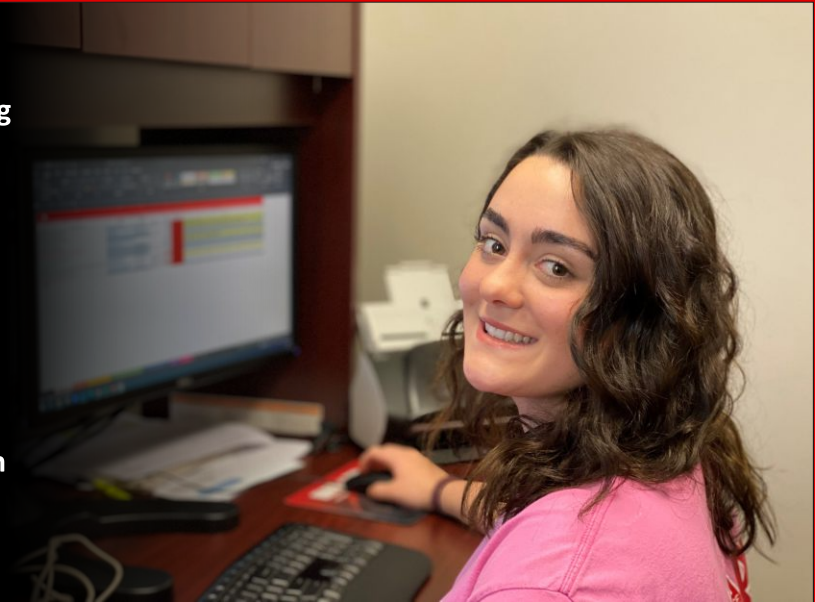
## Administrative Assistant



Madison Freyou joined the team in May of 2018 and helps the team with administrative duties. She's a big help to the team and really likes her job. She's also the great grand-daughter of our founder Roy Berard. Berard is truly a family business with several family members on the team.

"I like working at Berard because everyone is easy to work with and very outgoing." said Madison.

In her free time, she enjoys doing makeup, trying fun recipes, and going to the gym.



# Happy Birthday!

**Happy Birthday to These Dedicated Team Members!**

Kevin Beinvenu  
Ray Breaux  
Spencer Freyou  
Vicki Pellerin

Kelsey Pelous  
Sloane Simoneaux  
Joel Thibodeaux  
Karl Vann

Baron Berard